

PRESSURE PUMP

pneumatic – hydraulic, single- and double acting, pmax. 500 bar

Description:

These pneumatic hydraulic pressure pumps are suitable for application in simple clamping systems for actuating single-acting or double-acting clamping elements.

The pressure pumps convert a pneumatic inlet pressure into a hydraulic operating pressure. Pressure adjustment and compressed air treatment are done in an external maintenance unit.

The single-acting pressure pump clamps or unclamps the connected clamping elements by manual operation of the pedal. The pressure pump supplies hydraulic oil until the desired operating pressure is reached. The integrated check valve keeps the oil pressure constantly. In cases of pressure loss e.g. through leakage, automatic replenishment is not given.

The pressure pump for double-acting clamping elements allows constant pressurization. Clamping and unclamping of the clamping elements is done by using the control lever of the 4/3 directional valve.

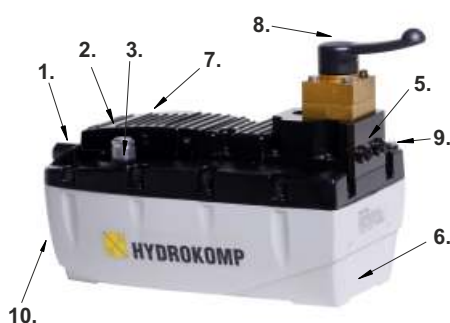
depending on the position of the directional valve, the clamping elements will extend or retract by pressing the pedal on "PUMP". The pedal must be pressed until the clamping elements have reached their end position and the desired oil pressure is built up. The pedal can be fixed in position by the pedal lock. After that, clamping and unclamping of the clamping elements can be done by using the control lever of the 4/3 directional valve.

When the pedal is fixed, the double-acting pressure pump can compensate a low pressure loss automatically.

single-acting with pedal

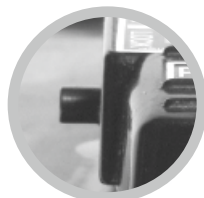


double-acting with 4/3 directional valve



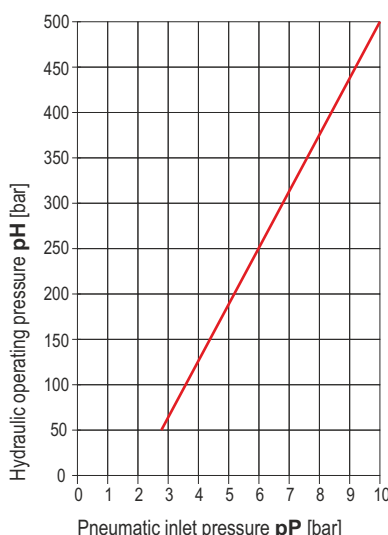
7. Pedal lock with locking pin

10. Oil level gauge



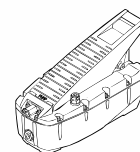
1. Pressure inlet port
2. Pedal, "PUMP" (pressure build-up)
3. Filling and ventilation plug, at double-acting pressure pump: port for drain into reservoir
4. Pedal, "RELEASE" (pressure relief)
5. Ports for hydraulic hoses
single-acting: 1 port
double-acting: 2 ports
6. Pump body with reservoir
7. Pedal lock (not in picture)
8. 4/3 directional valve with control lever
9. Bleed screw
10. Oil level gauge (not in picture)

Operating pressure p_H depending from pneumatic inlet pressure p_P



Webcode: 043001

more information on our website



Important notice:

- ☒ Scope of supply includes an user's manual. The safety and maintenance instructions must be observed.

Hydraulic oil:

- ☒ Recommendation:
- Hydraulic oil DIN 51524, HLP 22
- Viscosity DIN 51519, ISO VG 22
- ☒ The pressure pumps are already filled with oil. They are supplied ready for connection. It is not necessary to use a mist oiler.

Advantages:

- ☒ Integrated pressure control valve up to 500 bar
- ☒ Low weight, easy to transport
- ☒ Suitable for mobile application
- ☒ Suitable for application in explosive hazardous areas



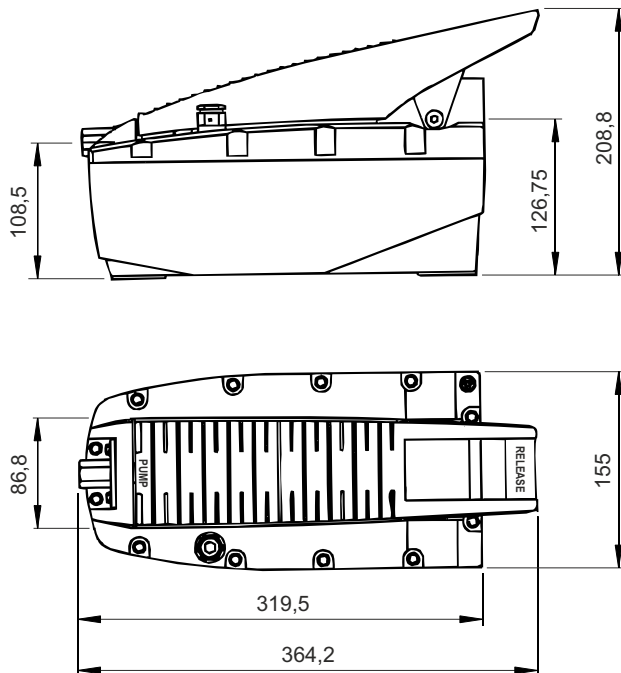
HYDROKOMP®
Hydraulische Komponenten GmbH

Siemensstraße 16, 35325 Mücke (Germany)
Phone: +49 6401 225999-0
Fax: +49 6401 225999-50
E-mail: info@hydrokomp.de
Internet: www.hydrokomp.de



Pressure pump, pneumatic – hydraulic

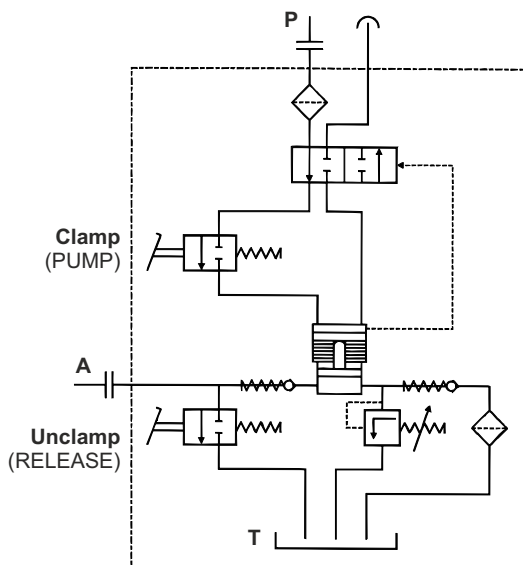
single-acting, with pedal



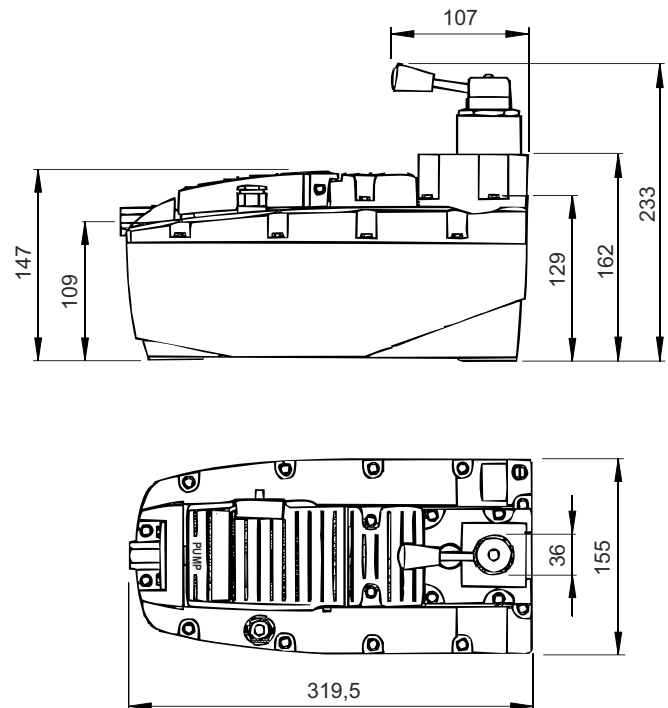
Technical data:

| | | |
|---|------------|-----------------------|
| Pneumatic inlet pressure p_P | [bar] | 2,8 - 10 |
| Operating pressure p_H min. | [bar] | 50 |
| Operating pressure p_H max. | [bar] | 500 |
| Flow rate max. at 7 bar | [l/min] | 1,4 |
| Pneumatic port thread | | G1/4 |
| Air consumption max. | [Nl/min] | 400 |
| Hydraulic port thread | | G1/4 |
| Oil volume | [l] | 2,3 |
| Oil volume, useable | [l] | 2,1 |
| Weight, filled | [kg] | 6,3 |
| Noise level | [dB(A)/1m] | 75 |
| Order number | | DLH-EW-500-001 |

Circuit example, single-acting:



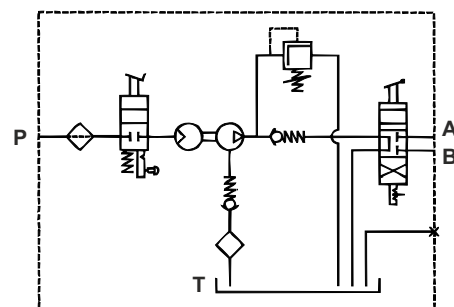
double-acting, with 4/3 directional valve



Technical data:

| | | |
|---|------------|-----------------------|
| Pneumatic inlet pressure p_P | [bar] | 2,8 - 10 |
| Operating pressure p_H min. | [bar] | 50 |
| Operating pressure p_H max. | [bar] | 500 |
| Flow rate max. at 7 bar | [l/min] | 1,4 |
| Pneumatic port thread | | G1/4 |
| Air consumption max. | [Nl/min] | 400 |
| Hydraulic port thread | | G1/4 |
| Oil volume | [l] | 2,3 |
| Oil volume, usable | [l] | 2,1 |
| Weight, filled | [kg] | 6,8 |
| Noise level | [dB(A)/1m] | 75 |
| Order number | | DLH-DW-500-002 |

Circuit example, double-acting:



A = Hydraulic port
B = Hydraulic port
P = Pneumatic port
T = Oil reservoir